

***QGI Monthly Meeting Schedule***

- **General Meeting:**  
December Meeting Only  
1st Thursday, 6:30  
Second Presbyterian Church  
7700 N. Meridian Street  
Indianapolis, IN
- **QGI North:**  
1st Friday Monthly,  
1:00—3:00pm  
Primelife Enrichment Ctr.  
1078 3rd Ave. S. W.  
Carmel, IN
- **Out to Lunch Bunch:**  
4th Thursday Monthly,  
11:00am  
(except Nov. & Dec.)  
Jonathan Byrd Cafeteria  
I-65 South, Exit #99  
Greenwood, IN
- **Charity Quilts:**  
3rd Thursday Monthly,  
9:30am—3:00pm  
N United Methodist Church  
NW corner of 38th & Meridian (bring your own lunch)

**Quilt Show Recap**

**General Meeting, November 10<sup>th</sup>**

Come see the best quilts from this year’s show, and hear a recap of “A Quilter’s Journey.” Whether or not you were able to attend the show, this meeting is one to see because of all the gorgeous quilts! We’ll celebrate our creative work, and get a detailed report from the committee on the goings on at the show. And don’t forget that we’ll also be drawing the name of the winner of our raffle quilt that night. Although you need not be present to win, it’s more fun for everyone when the winner is present, so be sure to come!

We’ll also be voting on the new bylaw changes at the November meeting, so as you can see, this meeting will be a busy one.

**Guild Holiday Party**

**December 1st, 2011**



Every year in December, we celebrate the holidays with a special party during the General meeting. This year, the Guild Holiday Party will be held on December 1st, from 6:30 to 9 PM. Treat yourself to a wonderful evening and sign up for Guild Holiday Party at any Guild meeting through November 18th. There is a small charge for attendance which helps to cover part of the cost of the dinner. Tickets are \$10, and may be purchased at OTLB, QGIN, or the General meetings through November.

**Indianapolis Children’s Choir** I am happy to announce that the Holiday program will feature a concert by the Indianapolis Children’s Choir! As some of you know, my daughter Katerina (who is a Guild member and Special Assistant to the President <wink>) is also a member of the Indianapolis Children’s Choir, which is comprised of eight performing choirs. Katerina is a member of the highest-level choir, Cantantes Angeli, which is the choir that will be performing for us at the Guild Holiday Party. This world-renowned choir is ranked second in the nation, and when you hear these angels sing, you will wonder why they aren’t ranked first—they are that good!

If you want to preview this exquisite choir before the Christmas party, tickets are now on sale for its 2011-2012 concert season, (continued on page 2)



**INSIDE THIS ISSUE:**

President’s Corner	<b>2</b>
President’s Challenge	<b>2</b>
QGI Lectures and Workshops	<b>4</b>
QGIN Minutes	<b>6</b>
Roving Reporter	<b>8</b>
OTLB Minutes	<b>9</b>
Block of the Month	<b>10</b>



## President's Corner

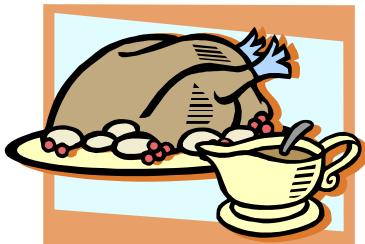
### A Message from Jennifer Fulton

#### My Grateful Thanks

In November, my thoughts turn to Thanksgiving and the blessings I have received this year.

First, I am blessed to have a wonderful, patient husband who understands my quilting passion and who occasionally joins in the fun by helping me select just the right fabrics for a quilt. I am also blessed by being a mother of the most wonderful girl in the world. This year, Katerina started high school, and as a mom, I wondered how well she might handle the transition. Katerina has met her challenges with humor and confidence, and is becoming a beautiful young woman. They make me very proud and grateful.

I am also grateful for this year as your President. True, it's not



over yet, but all too soon it will be. As I look back, I wonder at the number of new friends I have made—friends I would never have known had I not gotten this opportunity to work with them so closely. The peo-

ple who work for the Guild are a diverse group, brought together by our love of quilting—but we are also generous, kind, and loving. Having such friends is a blessing indeed.

I am also grateful for all the help I have received. Our Guild is filled with good people who are willing to lend a hand anytime it's needed. Truly, as I look back on this year, I have been blessed in so many ways, and most of those blessings have come from you, the Guild. I thank you all from the bottom of my heart.

#### Guild Party Continued:

“Kaleidoscope of Song”. View the entire concert listing at: <http://www.icchoir.org/site/PageServer?pagename=ConcertCal>. By the way, “Celebrate America,” a concert to be held on November 12, is FREE to all veterans. Call 317-940-9640 or order tickets online at [icchoir.org](http://icchoir.org).

## President's Challenge

By Jennifer Fulton

Whether or not you've entered any of the other challenges, I invite you to try this last one out. It's due in December (January for the OTLB meeting), so you have plenty of time to get it done—please try it!

For this last challenge, your entry must:



**Use the challenge colors only, in whatever percentage you want**

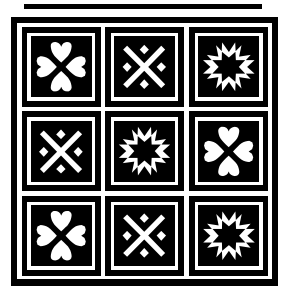
The challenge colors were yellow, red, blue, green, white, and black. So for example, you could make an entry that's all yellow if you like, or blue, green, and white. But you can't make something with purple in it, because that's not one of the colors.

#### Use at least two of the challenge techniques

The challenge techniques included surface embellishment, applique, paper-piecing, and curved piecing. For this last challenge, I'm adding **photo transfer** as a technique. You do not need to use photo transfer in your entry, but it is a new technique added for this challenge that you might want to try. You can use other techniques as well, in whatever percentage you feel like—in other words, you could make an entry that's 90% piecing and 10% applique if you want.

**Be inspired by this spark word:  
challenge**

What does the word challenge mean to you? Show us with your quilt!



## Cathy Franks Quilting & Design



CATHY FRANKS - Owner  
Finish Them In Your Lifetime

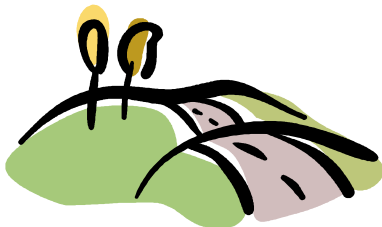
145 Maple Crest Drive  
Carmel, IN 46033  
(317) 571-9505  
[cathyfranks@indy.rr.com](mailto:cathyfranks@indy.rr.com)

Machine Quilting  
Custom Quilt Design

[www.cathyfranks.com](http://www.cathyfranks.com)

## Fall 2011 QGI Retreat Report

On September 16-18, 40 QGI members and friends went “On the Road” to the Holiday Inn and Conference Center in Columbus IN for our fall retreat. We enjoyed having time to work on our quilts, visiting with others, being visited by the “quilt police,” winning door prizes and learning new things. Betty and Donna from the shop “Sew Much More” were our vendors and also provided several demonstrations.



The raffle block, “Trail of Treasures”, was designed by Mary Strinka. 80 blocks were turned in and were won by Mary and Lynette Reynolds. No, the drawing wasn’t rigged—Mary made quite a few of the blocks. She also entertained us by rearranging the blocks into different settings throughout the weekend.

The charity project this year was making pillowcases for the children at Lutherwood. A total of 70 pillowcases were turned over to Donna Huse to take to this facility for children in crisis.

Members of the planning committee for this retreat were Bonnie Borntrager, Pam Durant, Jennifer Fulton, Mary Strinka, Sandy Swircek, Alice Martina Smith, Terry Lichtenfelt and Pat Wilser. More pictures from the retreat are on the QGI Facebook page. Alice Martina Smith is planning the next retreat in the spring of 2012. We’d love to have you join us for another enjoyable weekend!

### Anna Sweet working on her quilt



Donna showed us an interesting way to make a Mariner’s Compass block.



Mary Strinka and Lynette Reynolds each won 40 of these blocks

### LITTLE SCRAP QUILT SHOP

*Colors to inspire. Time to Relax.*

*A Place to Create!*

*Providing for your quilting and sewing needs!*

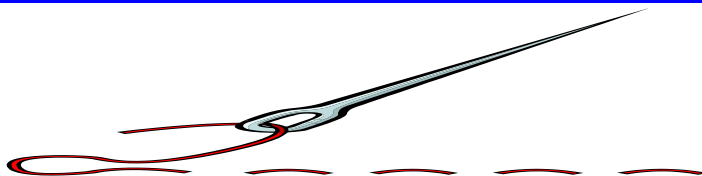
Webster Plaza—4043 S. Webster, Kokomo 46902

765-450-4434 [littlecrapquilts@gmail.com](mailto:littlecrapquilts@gmail.com)

Find us on Facebook too!

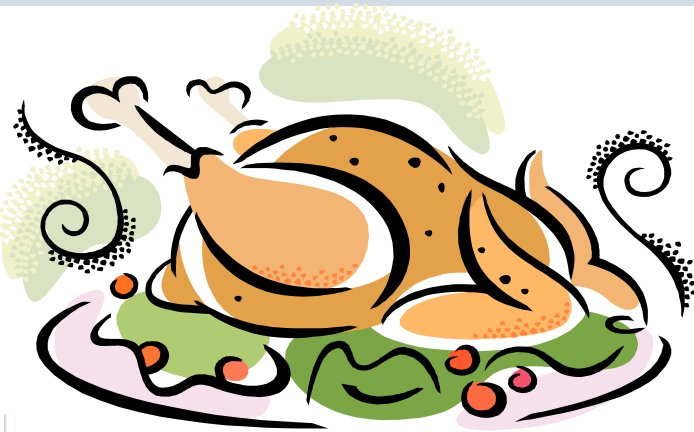
Shop Hours:

Tues, Thurs & Fri 10-5, Wed 10-8, Sat 9-4



## QUILTERS GUILD OF INDIANAPOLIS 2011/2012 LECTURES and WORKSHOPS

Date	Lecture / Workshop	Speaker/ Instructor	Details
December 1	Lecture	Special Events Committee	Christmas Party
January 12	Lecture	Mary Buvia	Trunk Show
February 9	Lecture	Caryl Schuetz	<a href="http://www.quiltvalues.com">www.quiltvalues.com</a>
February 10	Workshop	Caryl Schuetz	Tee Shirt Quilt <a href="http://www.quiltvalues.com">www.quiltvalues.com</a>
March 8	Lecture	Kathy Tracy	A Little History of Quilting
March 9	Workshop	Kathy Tracy	Remembering Adelia
April 12	Lecture	The Singing Quilter – Cathy Miller & John Bunge	<a href="http://www.singingquilter.com">www.singingquilter.com</a>
May 10	Lecture	Wendy Butler Berns	<a href="http://www.wendybutlerberns.com">www.wendybutlerberns.com</a>
May 11	Workshop	Wendy Butler Berns	Captivating Cone Flower, \$10 pattern fee <a href="http://wendybutlerberns.com/wshopA6-BirchTrees.htm">http://wendybutlerberns.com/wshopA6-BirchTrees.htm</a>
May 12	Workshop	Wendy Butler Berns	Out of the Blocks Quilt Design <a href="http://wendybutlerberns.com/wshopB3-OutofBlocks.html">http://wendybutlerberns.com/wshopB3-OutofBlocks.html</a>
June 14	Lecture	Gayle Bong	Tips, Tops, and Tales <a href="http://www.gaylebong.com">www.gaylebong.com</a>
June 15	Workshop	Gayle Bong	Fancy That <a href="http://www.gaylebong.com/lectures.html">http://www.gaylebong.com/lectures.html</a>
July 12	Block Party	Special Events Committee	
August 9	Lecture	Janet Miller	My Quilting History and Tips
September 13	Lecture	Cathy Franks	<a href="http://www.cathyfranks.com">www.cathyfranks.com</a>
September 14	Workshop	Cathy Franks	TBD
October 11	Lecture	Deb Karasik	<a href="http://www.debkarasik.com">www.debkarasik.com</a>
October 12	Workshop	Deb Karasik	Midnight in the Forest, \$15 pattern fee <a href="http://www.debkarasik.com/classes-detail.php?ID=2">http://www.debkarasik.com/classes-detail.php?ID=2</a>
October 13	Workshop	Deb Karasik	Inner Light, \$15 pattern fee <a href="http://www.debkarasik.com/classes-detail.php?ID=11">http://www.debkarasik.com/classes-detail.php?ID=11</a>
November 8	Charity Quilt Work Night	Charity quilts Committee	
December 13	Holiday Party	Special Events Committee	



Happy Thanksgiving

Select Sewing Service

Join us for a class or club!

- Monthly Clubs, Quilting Classes
- Special Guest Teachers and Creative Classes

Proud dealers of

**PFAFF**

**bobby lock**  
FOR THE LOVE OF SEWING

Indy Quilt Guild Members receive 10% off all notions and accessories at both store locations!

2 Indy Locations  
North  
Keystone & 65th St. 255-6332  
West  
Rockville & Raceway Rd. 271-5648

www.selectsewingservice.com

## AQS Quilt Shows

### AQS Quilt Show and Contest

Lancaster PA

March 14—17th 2012

### AQS Quilt Show and Contest

Paducah, KY

April 25—28th 2012

### AQS Quilt Show and Contest

Grand Rapids, MI

August 22—25th 2012

### AQS Quilt Show and Contest

Des Moines, IA

October 3—6th 2012



### We Moved to

9840 N. Michigan Road (317) 757-8340

Carmel, IN 46032

www.quiltquarters.com

1/4 Mile North of 465 on Michigan Rd,  
Exit 27

**Over 6000 Bolts of Fabric, Books & Patterns**

**Join Us for Classes & Clubs**

**Patchwork Pals meets the 4th Monday of month**

-highlights quilting patterns & techniques-

**Sewing Circle/Embroidery Club meets the 3rd Sat**

-covers all sewing topics: garment, home dec, etc-

Authorized BERNINA dealer for

Sales & Service

**BERNINA+**

## QUILT SHOW

As I write this article, the Quilt Show is just three short weeks away. The committee has worked very hard to make the show a success. Showcasing the quilts of our members is one of the reasons we have the show. I have had a sneak peak at some of the entries and they are awesome.

I hope that you enjoyed the show. I would like to thank all of you who volunteered to work at the show – without your help it would not be a success. The show allows the Guild to continue to bring in premier speakers/teachers from all over the country and to support the other activities of the Guild.

*Carol G. Victory*

Chair

## QUILTERS GUILD OF INDIANAPOLIS NORTH GUILD MINUTES

October 7, 2011

**Respectfully Submitted by:** *Linda Coleman*  
*Acting, Secretary*

President Jo Kidwell called the meeting to order.

### Announcements

Jo Kidwell announced that a volunteer is needed to take minutes for December meeting. Debbie Goold announced that two positions still need to be filled for 2012 and those are a Co-Chair and a Show and Tell coordinator.

### Quilt Show

Carol Victory announced that Caryl Schuetz will be doing quilt appraisals at the show and that those who are interested should make appointments with Caryl.

Members are asked to make donations for the food court and to indicate what they will donate on the sign-up sheets. Recipes are available.

Carol reminded members that drop-off day for the quilts is October 22<sup>nd</sup> and that all quilts must have labels and be delivered in a cloth bag. Those who have not received registration information should contact Kathy Jensen. Carol also asked that unsold tickets for the raffle quilt be turned in **now** so it can be determined how many additional tickets may need to be printed.

Judy Parker has the sign-up sheets for volunteers to work at the quilt show and Kay Zahm still has show pins and tee-shirts available for purchase. Pam Reid has signs that can be put in the back window of cars to advertise the show and those will be available at the back of the room after the meeting.

Kathryn Wooldridge announced that the judging of quilts will take two days and additional volunteers are need for Wednesday morning. Please contact Kathryn if you are able to help.

### Charity Quilts

Mary Strinka announced that bundles of fabric are available for making charity quilts.

She encouraged members to pick up a bundle and make a charity quilt top. The recommended size is 60 inches by 80 inches and the tops do not have to be quilted. The third Thursday morning group will layer and tie the tops. The next meeting of this group is October 20<sup>th</sup> at the Methodist Church at 38<sup>th</sup> and Meridian. The group meets from 9:30-10:00 a.m. until 2:30-3:00 p.m. Members are encouraged to attend. Bring a sack lunch.

### Minute Fact

Debbie Goold shared information concerning the first quilt show put on by the guild in 1987. Sixteen hundred people attended.

### Tip of the Month

Jo Kidwell demonstrated a way to fold quilts in order to avoid creases in the quilt. This involved folding the quilt on the diagonal and then folding it like an envelope.

### Block of the Month

Terry Lichtenfelt and Margaret Duke reported that 14 "Endless Chain" blocks had been turned in and these were won by Mary Strinka. Next month's block is "Goose Creek" to be made in Fall colors. (Goose Creek, Texas, is Margaret's home town.) Terry reminded members that Jo Kidwell has chosen for her President's block the "Aunt Dinah" pattern which was a block of the month earlier this year.

### Mystery Quilt

Ruth Middleton asked that all participants bring their completed Mystery Quilt tops to the November meeting for Show and Tell. They do not have to be quilted to be shown.

### Show and Tell

Six members showed completed quilts, including one by Susan Cook that had recently won a ribbon at an area quilt show.

### Program

Julie Wheeler presented an interesting and informative program on The History of Quilts including photos of some of the earliest example of quilted items.

Franks	Cathy	Nov	1
Hoffman	Mary Jo	Nov	2
Wilser	Patricia	Nov	2
Woodworth	Jeannette	Nov	2
Turner	Linda S.	Nov	3
Burkett	Karen K	Nov	4
Sowder	Shari	Nov	4
Strinka	Mary	Nov	4
Kendrick	Twyllah	Nov	5
Barker	Alison	Nov	6
Grausam	Julie	Nov	6
Browne	Danielle	Nov	11
Comstock	Gloria	Nov	11
Martzolf	Nancy	Nov	13
Street	Deanna	Nov	13
Pearson	Corella	Nov	15
Dusing	Jeanette	Nov	16
Pemberton	Marie	Nov	16
Cook	Susan	Nov	17
Smith	Alice Martina	Nov	17
Glesenkamp	Darlene	Nov	18
Reid	Pamela	Nov	23
Rainwater	Barbara	Nov	24
Griswold	Jacqueline	Nov	25
Howard	Kim	Nov	27
Johnson	Linda	Nov	27
Sullivan	Meg	Nov	27
Scheib	Barb	Nov	28
Brokaw	Stephanie	Nov	29
Howlett	Carol	Nov	30

# Happy Birthday

## Newsletter Advertising

If you would like to advertise in Bits and Pieces, please contact Carol Decker at 317-784-5205 or [deckercl@yahoo.com](mailto:deckercl@yahoo.com)

### Sew Much More



8701 Southeastern Ave  
Indianapolis, IN 46239  
317-862-5739

Hours:  
TU-FRI 10 am-5 pm  
SAT 10 am-3 pm

Quality quilting cottons, patterns and notions.  
Full line of Floriani machine embroidery thread, stabilizers and software.  
Superior Thread - Rainbows, The Bottom Line, So-Finel and Masterpiece.  
Tutto sewing machine luggage.  
Classes.

10% discount on non-sale items for QGI members

[www.sewmuchmoredb.com](http://www.sewmuchmoredb.com)



## Sarah's Machine Quilting

Sales & Service

HINTERBERG  
DESIGN

Machine Quilting Frames

**NOLTING®**

765-779-4400

By Appointment

5308 N. Mechanicsburg Road  
Middletown, Indiana 47356

[www.gardenschools.com/smq](http://www.gardenschools.com/smq)

## Experts in Retirement Living & Senior Healthcare

### Our Services Include:

- Garden Homes
- Assisted Living Apartments
- New Energy Wellness
- Moving Forward Rehabilitation
- Auguste's Cottage Memory Care
- Long-Term Care
- Skilled Nursing Services
- Respite Care
- Hospice Care

American Senior Communities is proud to service 23 locations in the greater Indianapolis area. To find a location near you, visit our website at [www.AmericanSrCommunities.com](http://www.AmericanSrCommunities.com).



[www.AmericanSrCommunities.com](http://www.AmericanSrCommunities.com)





## THE ROVING REPORTER

By *Carol Victory*

This month the Roving Reporter is taking you to a guild workshop. If you have never been to a guild workshop, here is an opportunity to see how much fun you can have and how much you can learn.

The guild was privileged to have Flavin Glover as our speaker in September. She works with all kinds of log cabins. Seeing her quilts up close at the two workshops was a real treat for the participants.

On Saturday (the day the Roving Reporter was the host) there were 12 ladies in attendance. In the first couple of hours, Flavin explained all of her types of log cabins and gave everyone detailed handouts with tons of information about how to create them. Next everyone got down to business and started building her own blocks based on the worksheets. There was a quick break for lunch and then all got back to work. Flavin went around the room to offer ideas and assistance. By the end of the day, everyone had made great progress as can be seen in the pictures and left with a new technique under her belt.

Attending workshops sponsored by the guild is very beneficial for several reasons:

- o Participants spend quality time with the teacher
- o Participants learn a new technique or brush up on one previously learned
- o Participants spend the day with other guild members (meeting new friends)
- o Participants don't have to drive very far to attend
- o Participants come away with lots of new ideas (often learned from others)
- o Participants have a chance to win a free workshop when they complete their project and show it at one of the three guild meetings

There are several good speakers/teachers coming to our guild next year. Review the list and sign up for one or more of the workshops. If you are a new guild member it is a great way to get to know your fellow quilters. If your family is stumped for a birthday or Christmas gift, the Program Committee will be glad to help them purchase a workshop gift certificate.



Planning The Project



Lots of Inspiration



Class with Projects



Design Wall

## Out to Lunch Bunch Minutes

September 22, 2011

Respectfully Submitted By: *Diane Billiard*

Alice opened the meeting and announced her sidekick Dallas Reed was in Branson, MO enjoying a vacation. Alice reminded everyone to save pink Yoplail "Save lids to save lives" campaign.

The following members received gifts: Jodeen Kramer, Margaret Schmultz, Susan Corliss, Donna King, Anne Petrie, Linda Whitaker, Lydia Riggles, Donna Huse, Susan Standish and Cindy Howard. Guest Charlotte Livingston also received a gift.

### ANNOUNCEMENTS

\* Donna Huse, OTLB Charity Quilt chair reminded members she continues to collect batting UPC bar codes from Hobbs & Mountain Mist batting packages.

\* Lutherwood was the recipient of eight quilts sewed by Ana Sweet and Kathy Shain who went on a "quilting binge" over the summer to make them.

\* Kits were available for making pillowcases.

\* Donna introduced Mr. Smith, Principal of Winchester Village School who described the large numbers of Chin students from Burma in his school. The families arrive in the spring and fall and have very little resources to begin their new lives in the U.S. He said they are thankful for the warm quilts he accepted on their behalf.

\* Jennifer Fulton announced the President's Challenge would have a last challenge due at the January 2012 meeting. Look in the QGI newsletter for additional information.

\* The Board met in July and made decisions on the QGI by-laws. The revised by-laws will appear in the October newsletter and members will vote on them at the November General meeting.

\* Newsletters are being recycled after the meetings to local quilt shops. A box was available at the back table for newsletters.

\* The Nominating Committee is working to provide a slate of officers to be voted on at the October General meeting.

\* Jennifer announced she would be hosting the QGI holiday party on December 1<sup>st</sup>. That is a week earlier than usual. She reminded everyone to mark their calendars for the correct evening of fun.

\* Pat Wilser, QGI Vice President announced she still has the green 2011 rosters available.

She also announced instructions for a block for President Jennifer Fulton entitled Batik Signature Pinwheel was available on the back of the October QGI newsletter.

They are due at the December QGI General meeting for Pat to present to Jennifer.

\* Alice Smith had recipes available for anyone wanting to provide food for the Quilt Show.

\* The new OTLB chair will be Suanne Owens. She is already planning exciting programs for her 2012 term starting in January.

### SPEAKER

Lynn Hodge spoke on Mail able Postcards. She claimed she collected the most quilts in the smallest spaces. Lynn showed numerous postcards she had received from around the world and shared lots of ideas how to construct the cards. She uses cut designs, strips, paint sticks, discharge, embellishments and her computer to create one-of-a-kind postcards. Everyone got a chance to see stacks of her cards on each table.

### Want to Write and Article for the Newsletter?

All material for publication in the newsletter must be received no later than the 10th of the month prior to following month's publication (i.e.: November 10th for the December newsletter). Please email submissions to [qginewsletter@yahoo.com](mailto:qginewsletter@yahoo.com).

## December Block of the Month

### Pine Tree

8 x 10 ½ inch UNfinished



#### Colors

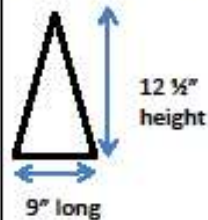
Tree – various greens.

Cut strips various widths

Background – any fabric with white/cream background that appears solid, tone on tone, with glitter etc.

Cut

2 units 3 ¾" x 2" rectangle



Cut 1 triangle, as shown, then cut in half up the center to make 2 mirror image triangles.

Tree Trunk – brown

Cut 1 unit 1 ¾" x 2" rectangle

#### Construction

Before sewing make the template for the tree. Draw a base line 6 ¼" long. From the midpoint of the base line draw a vertical line 8" upwards. Join the end points to make the triangle. Check the dimensions. Draw a line around the triangle adding ¼" to get your cutting lines. Cut out.

Sew the green strips together; using your template to make sure they are correct length. Strips can be sewn together straight, at an angle or braided. Cut finished piece to template size.

Place a white triangle, right sides together on top of the tree shape ready to sew. You will have a long tail at the bottom. Measure up the edge you're going to sew 3" from the end of the tail, and mark. Move this mark till it is in line with the bottom of the tree. Then sew. Repeat with the other side. Press to background. Trim.

Sew the 3 pieces from the bottom strip together as shown. Press to the dark. Sew the strip onto the bottom of the tree patch as shown. Press to the dark. Trim if necessary.

## QUILTERS GUILD OF INDIANAPOLIS NORTH 2011 PROGRAMS

Date	Speaker/Instructor	Details
December 2	Christmas Party Comedian Clara Trusty	Comedian, Food and Fun

## OUT TO LUNCH BUNCH 2011 PROGRAMS

Date	Speaker/Instructor	Details
December	No Meeting	
January 26	Material Girls—Indy Bee	Tips Tricks and Shortcuts



### Indiana Heritage Quilt Show

March 1,2,3, 2012

Bloomington Monroe County Convention Center

3 Full Days of Quilt Workshops and over 200 Quilts on Display

Thurs and Friday 9am — 6pm

Saturday 9am — 5pm

**The Fussy Cut Quilt Shop**

- Creative Ideas
- Friendly Service
- Quality Fabrics

201 Bethel Avenue, Suite A-1  
Beech Grove, IN 46107  
317-786-9289  
[www.theFussyCut.com](http://www.theFussyCut.com)

### Quilting Tidbits of History

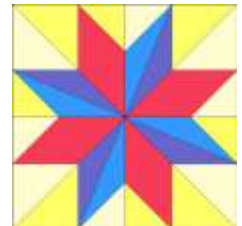
The diamond was a special favorite in New England for use in making "best quilts." Almost always the quilting on diamond quilts was more elaborate and painstaking than that on square or triangle patches.

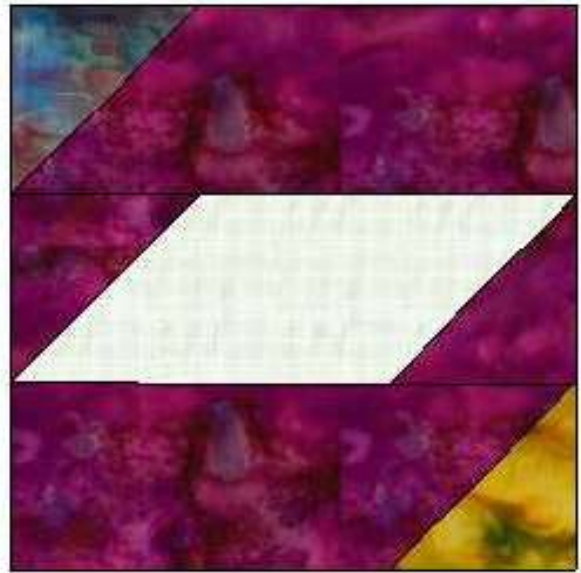
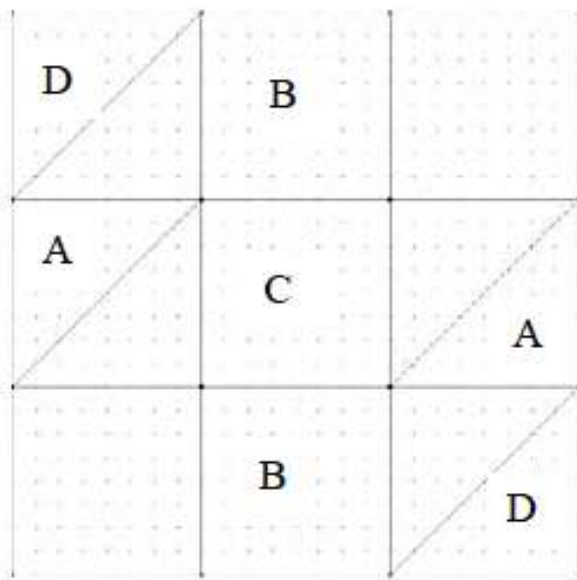
The reason was that cutting and piecing diamonds was undertaken only when there was no pressing need for bed quilts, because it took so long that by the time the quilt was complete, the quiltmaker had so much time and love invested in the quilt, it called for nothing less than the best quilting.

Because these quilts were so special, they were generally not used as bed quilts, so many of them are in very good condition for their age.

The most easily cut diamond patch is one that divides the patch into eight diamonds, and is commonly known as the Star of LeMoyne. Quiltmakers did not sit down with their compass, ruler and pencil to draft this star block, but instead created the pattern pieces by folding a square of cloth in a prescribed fashion and then cutting along the fold lines.

This created finished size template pieces that the quiltmaker could use to place on the fabric she used in her quilt. She simply placed the fabric template on the quilt fabric, added the seam allowance and then cut around the template to make her patch.





### Batik Signature Pinwheel – Jennifer’s President’s Block

I think Jennifer Fulton has done a great job this year as Guild President, and if you feel the same and you would like to thank Jennifer for her good work, please make her one of these blocks. The block uses three different batik fabrics (one main batik, and two accent colors, for the corners of the block) and a white on white fabric. When the block is finished, sign your block in the white area. Turn in your finished block to me (Pat Wilser) and I will present them to Jennifer as a surprise during the December General meeting. (Shhh! Don't tell her!)

From white on white fabric, cut:

C – Cut 1 – 3 ½" x 9 ½" rectangle

From Batik One (main color batik), cut:

A – Cut 2 – 3 ½" squares

B – Cut 2 – 3 ½" x 9 ½" rectangles

From Batik Two (for one corner, as an accent), cut:

D – Cut 1 – 3 ½" square

From Batik Three (for the other corner, as an accent), cut:

D – Cut 1 – 3 ½" square

1. Mark a diagonal on two A squares of the Batik One fabric. Sew As along this marked line, to opposite sides of the white C rectangle, as shown in the diagram. Press to As.
2. Mark a diagonal on a D square of the Batik Two fabric. Sew the D square along this marked line, to left side of the B rectangle of the Batik One fabric, as shown in the diagram. Press to D.
3. Mark a diagonal on a D square of the Batik Three fabric. Sew the D square along this marked line, to left side of the B rectangle of the Batik One fabric, as shown in the diagram. Press to D.
4. Following the diagram, sew three rows together. Press to the outer rows.
5. Sign your block in the white area.

## Welcome Our New Officers!

At the October General meeting, an election was held for the slate of 2012 officers. I'm proud to introduce you to the ladies who will be leading the Guild beginning January 2012.



President—Pat Wilser



Vice Pres.—Mary Strinka



Secretary—Stephanie Brokaw



Quilt Show Chairs—Judy Parker and Kay Zahm



Treasurer—Michelle Hoel

### The impact of choosing a particular color for your quilt:

**Blue** is found in the sky and water, it has a *calm* and *peaceful* effect. Turquoise is *warm* and *happy*. Blues decrease blood pressure, heart rate, encourages rest, and hence is popular in bed and bath.

**Green** is found in gardens, hills and forests. It often represents *re-growth* and *life*, *healing* and *youth*. It is very passive and relaxing.

**Yellow** is found in sunshine, harvest grains and flowers. It is also found in gold, one of the earths most desirable metals. It is an imperial color representing *youth* and *happiness*.

**Orange** is found in soil, fruits, vegetables and earthy autumn dawn. Orange represents *security*. Too much can be uncomfortable and a little offensive to a sensitive eye, however in smaller doses it has the potential to stimulate *creativity* and *hunger*.

**Brown** is a neutral and earthy color, similar to orange. Brown is also the color of chocolate. It represents *natural feelings*, *security* and *trust*. It can be *melancholic* and a little *depressing*. (Continued on page 14)

## Blog of the Month <http://bjws.blogspot.com/>

October was a very busy month for many QGI members, and a time of great creativity and celebration of our creations at the quilt show. Lean back and relax, take a break at your computer some day to enjoy some great art. One day while researching a relative born in colonial times, I came across one of Barbara's websites, and I sure am glad I did.

When you go to <http://bjws.blogspot.com/> there is a column of smaller paintings with captions like "Working with Textiles". The painting on the left is by the artist Hans Heysen (1877-1968) and the person sewing is the artists wife, this was done in 1913.



As you scroll down, there are over 50 paintings that Barbara has collected of women working with textiles to share with us. Some are obviously working on embroidery work, others fashioning clothing, and some sure look like they're making quilts to me. The artists' (from all over the world, from many time periods) skills and styles vary widely. The paintings and sketches cover many time periods, whether they are working with the textiles indoors or outdoors, surely there is something there to bring a smile to your face. Does one by a Ukranian artist make you think of your bee? The Filonov picture makes

you glad that you don't work in a Factory in Krasnaya Zaria? Glad you don't worry about sewing wearing all those yards and yards of fabric—and not stitching your skirt into your quilt?

This blog, which focuses on everyday life is called "Its About Time". It has many other interesting groups, everything from "Hats & Hair", "Folk Art", and "Laundry". These remind me of how lucky I am to have a modern washer, dryer, and iron.



If you click on the profile of Barbara who maintains this blog, you'll see that she has four other blogs, 17<sup>th</sup>, then 18<sup>th</sup>, then 19<sup>th</sup> century American Women, as well as Early American Gardens. Enjoy a trip around them too. You might even find an ancestor like I did. <http://bjws.blogspot.com/>



Impact of colors continued from page 13:

**Red** is found lots in nature flowers, fruit and vegetables. It is the most powerful color, representing *passion, anger, love and fire*. Only a small amount is needed to have an impact! Red stimulates the brain, raises blood pressure and pulse. Pink is a gentler version, quieter and more feminine.

**Purple** was initially very expensive and hence became a favorite of ancient rulers, wealthy, nobles, and royalty. It is found in nature a lot and represents *love, wisdom and sadness*.

**Neutrals** are white, black and grey. White represents *purity, cleanliness, and chastity*. Black represents *death, mourning and desolation*. Grey is a mixture of the two, and often represents *confusion and work*.

