



QGI Monthly Meeting Schedule

- **General Meeting:**
2nd Thursday Monthly,
7:00 pm
Second Presbyterian Church
7700 N. Meridian Street
Indianapolis, IN
- **QGI North:**
1st Friday Monthly,
1:00—3:00pm
Primelife Enrichment Ctr.
1078 3rd Ave. S. W.
Carmel, IN
- **Out to Lunch Bunch:**
4th Thursday Monthly,
11:00am
(except Nov. & Dec.)
Jonathan Byrd Cafeteria
I-65 South, Exit #99
Greenwood, IN
- **Charity Quilts:**
3rd Thursday Monthly,
9:30am—3:00pm
N United Methodist Church
NW corner of 38th & Meridian
(bring your own lunch)

INSIDE THIS ISSUE:

President's Corner	2
President's Challenge	4
QGI Lectures and Workshops	5
QGIN Minutes	7
Roving Reporter	9
OTLB Minutes	12
Block of the Month	18

An Interview with Flavin Glover



Q: Where do you find your artistic inspiration today?

A: Nature offers special inspiration. Also, stylized motifs that I see on billboards, tile flooring, and window panes, you name it—a potential quilt design is lurking.

Q: Was there one quilt pattern or design that inspired you to begin your quilt making journey?

A: Yes, Log Cabin patchwork has offered countless design opportunities for me. For over 30 years I have been building new Log Cabin blocks to fit into design grids depicting shapes and images. For every quilt design, three or four new design possibilities emerge. Do the math on that to determine when I will be caught up!

Q: What would you change about your sewing area and why?

A: Our cats would stay on the cat pillows and not sleep in my chair or offer assistance while I am machine piecing.

Q: What advice would you offer the beginning quilter in regard to tools, fabric, inspiration?

A: When you see fabric you like, buy it! You may not see that specific fabric again. Also, if you buy the same fabric twice, that is a good indication the fabric fits into your color fancy, rather than poor memory!

Q: What brand/model of sewing machine do you use?

A: Bernina

Q: Why do you think there's been such a resurgence in quilting over the past few years?

A: Many reasons—bountiful opportunities to be creative with color and shapes. Quilting is an art and craft that connects us to the past, yet provides new ways and techniques to create.

Q: Aside from your sewing machine, what are your three most indispensable quilting tools?

A: Rotary cutter, ruler and mat.

Q: In your opinion, what do you think will be the next “hot trend” in quilt-making?

A: You never know!



President's Corner

A Message from Jennifer Fulton

Make No Mistake, I Love Quilting

September is back-to-school month, and this year, my daughter Katerina begins high school. Nowadays, it's hard not to notice how she looks and acts more like a young lady than a little girl. Time passes so quickly these days. At some point in the near future, Katerina will be dating, then eventually getting married and having children of her own. I remember so clearly when my little girl started preschool; she was afraid to be without her mom, but happy to have playmates for a few hours a day. Now she's off to high school and beginning a new chapter in her life.

At each stage, I've struggled as a parent to give Katerina what she needs most from me. I have to admit that this latest stage in Katerina's life has been the most challenging, as I struggle to help her make the transition from a young girl to a young adult. As a mom, I have found that the biggest challenge has been restraining myself from protecting Katerina too much. I am learning that my role as her mother is to let her make mistakes, and not to try preventing them from happening. It's by making mistakes that we learn how not to, so I have to let her learn at her own pace, and from her own mistakes. Knowing all this, of course, doesn't make any of this easier.

It's the same way with quilting—from our mistakes comes the knowledge of what not to do, and if we're lucky, the knowledge of how to do something right next time as well. What's hard with quilting is being brave enough to try something new and different, even if we know we might make a mistake. I especially find it hard to cut up some expensive or beautiful fabric in order to create a quilt top that might end up plain ugly. Still, I often take the risk, knowing that even if the quilt ends up looking like a disaster,

I'll at least know what not to do next time. Even so, it's hard to remind myself that mistakes don't spell disaster, but lead to valuable life lessons. Well, no one said that quilting was easy, but like motherhood, it's definitely worth it.

A Call for Winners



It's State Fair time again, and that reminds me. I know that many of you enter your local county fair, state fair, or other quilt show, and come home with a ribbon or other award. If you have won an award, ribbon, or other recognition anytime this year, please let me know so I can collect that information for our Guild history.

Currently, this is what I know:

Indiana State Fair:

- 1st Place, Karen Burkett, Mixed Techniques Bed
- 1st Place, Karen Burkett, Non-Professional Printed or Dyed Textiles
- 2nd Place, Karen Burkett, Embellished Fabrics
- 2nd Place, Karen Burkett, Miniature Wall Hanging Quilts
- 2nd Place, Karen Burkett, Novelty Quilts

Common Threads Quilt Show (late 2010)

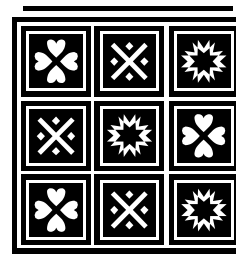
- Reserve Champion, Karen Burkett, Domestic Machine
- 2nd Place, Karen Burkett, Domestic Machine

Some little birds have let me know recently that Pam Reid and Janet Shotwell have also done well recently at several fairs, so please email Jennifer Fulton with the details (jennifer.fulton@ingenus.info)!

IT'S ALMOST HERE!

By Carol Victory

Can you believe it? The quilt show is just a little over a month away!! The committee has been working tirelessly to prepare. You the Guild members have also helped with your generous donations of items for the Peony Shop, the mystery bags and the raffle baskets. You have also signed up to volunteer at the show and bring food items and baked goods for the Food Court.



Don't forget to pick up tickets for the raffle quilts from Debbie Goold or Lorelei Campbell. The quilt always brings in a lot of money which helps to support the guild and allows us to have the top notch speakers that come every year.

I hope that many of you are working on your challenge quilts. It is not too late to start one if you get going right away. Just think of a favorite trip you took with your family, your friends or your quilt bee. There are so many possibilities. I have had the chance to peek at a couple of the entries and they are just great.

Kay Zahm still has t-shirts and pins available for sale. See her at any of the meetings or at the show.

If you want to sign up to volunteer, please contact Judy Parker or talk to her at one of the meetings. Many hands make light work.

If you have any questions about any part of the show, please ask any of the committee members or contact me by phone (317-627-7806) or email (carol.victory@yahoo.com).

NQA Teacher of the Year Announced

Lois T. Smith from Rockville, Maryland, is a teacher known for instilling, by example and word, the love of quilting and the value of excellence and attention to detail. She values the memories gathered over thirty years of teaching.

"To see passion override reason in a student is the highest compliment one can receive," says Lois.

Lois is both an NQA Certified Teacher and NQA Certified Judge. In addition to teaching locally and in more than forty states, Lois has taught in Africa, Brazil, Canada, and Scotland. Her quilt, *Golden Memories of Christmas*, won Best of Show in the Houston Quilt Festival in 1988 and was the first machine quilted piece to win that honor. Her *Summertime Sampler* is a part of the permanent collection of the National Quilt Museum in Paducah, Kentucky.



While Lois' early work stemmed from traditional geometric patterns with a twist, more currently her pieces include her hand dyed fabrics and various surface design techniques. Most pieces relate to nature and the sea. Design elements or feelings come together as her work progresses. Lois seldom sketches a piece in detail, but puts more emphasis on collecting a workable color palette of fabrics that will then develop bit by bit. She is often surprised by the outcome. Once pieced or appliquéd, copious amounts of free-motion machine quilting are used to enhance and embellish the quilt surface.

Lois Smith is the author of *Fun and Fancy Machine Quiltmaking* (American Quilter's Society, 1989) and *Lois Smith's Machine Quiltmaking* (American Quilter's Society, 1997).

A native of Illinois, she graduated from Monmouth College and is married to Donovan A. Smith. They have seven children, ten grandchildren, and enjoy a vacation home on Chincoteague Island, Virginia.

President's Challenge

By *Jennifer Fulton*

I want to invite all the challenge entrants to show their quilts in the Quilt Show. Be sure to make a note on the entry form that yours is a President's Challenge entry so everyone can identify it as such. If you forgot to make that notation, contact Kathy Jensen who is in charge of Quilt Show registrations, right away.

There will be one last President's Challenge, due in December (January for the OTLB meeting, which doesn't meet in December). Since you have plenty of time to get this challenge done, I'd love to see everyone try it!

For this last challenge, your entry must:

Use the challenge colors only, in whatever percentage you want

- The challenge colors were yellow, red, blue, green, white, and black. So for example, you could make an entry that's all yellow if you like, or blue, green, and white. But you can't make something with purple in it, because that's not one of the colors.

Use at least two of the challenge techniques

- The challenge techniques included surface embellishment, applique, paper-piecing, and curved piecing. For this last challenge, I'm adding **photo transfer** as a technique. You do not need to use photo transfer in your entry, but it is a new technique added for this challenge that you might want to try. You can use other techniques as well, in whatever percentage you feel like—in other words, you could make an entry that's 90% piecing and 10% applique if you want.

Be inspired by this spark word: challenge

The winners for the August challenge include:

QGIN--1st place—Mary Strinka, 2nd place--Margaret Duke, 3rd place--Trish McComas, Honorable Mention--Barbara Hayes

General—1st place—Mary Strinka, 2nd place—Jackie Griswald, 3rd Place—Margaret Duke, Honorable Mention—Barbara Hayes

President's Challenge Winners



1st Place—Mary Strinka



2nd Place Margaret Duke



3rd Place—Trish McComas



Honorable Mention - Barbara Hayes

QUILTERS GUILD OF INDIANAPOLIS 2011 LECTURES and WORKSHOPS

Date	Lecture / Workshop	Speaker/ Instructor	Details
September 8	Lecture	Flavin Glover	A Progressive View of Log Cabin Design Website: www.flavinglover.com
September 9 & 10	Workshops	Flavin Glover	Friday Workshop: Colorful and Creative Log Cabin Diamonds Saturday Workshop: Innovative Courthouse Steps
October 13	Lecture	QGI Members	Mini Workshops
November 10	Lecture		Quilt Show Report
December 1	Lecture		Christmas Party

QUILTERS GUILD OF INDIANAPOLIS NORTH 2011 PROGRAMS

Date	Speaker/Instructor	Details
September 2	Beekeeper	Learn All About Northside Bees
October 7	Julie Wheeler	History of Quilts
November 4	Jennifer Titus	How to Use a Quilter's Calculator
December 2	Christmas Party Comedian Clara Trusty	Comedian, Food and Fun

OUT TO LUNCH BUNCH 2011 PROGRAMS

Date	Speaker/Instructor	Details
September 22	Lynn Hodge	Mailable Art
October 27	Caryl Schuetz	From Where it Starts to Where it Ends
November	No Meeting	
December	No Meeting	

Cathy Franks Quilting & Design



CATHY FRANKS - Owner
Finish Them In Your Lifetime

145 Maple Crest Drive
Carmel, IN 46033
(317) 571-9505

cathyfranks@indy.rr.com

www.cathyfranks.com

Machine Quilting
Custom Quilt Design

LITTLE SCRAP QUILT SHOP

Colors to inspire. Time to Relax.

A Place to Create!

Providing for your quilting and sewing needs!

Webster Plaza—4043 S. Webster, Kokomo 46902

765-450-4434 littlecrapquilts@gmail.com

Find us on Facebook too!

Shop Hours:

Tues, Thurs & Fri 10-5, Wed 10-8, Sat 9-4

Call for grocery sacks!

Save those brown paper bags for our show's mystery bags!

Bring 'em to the General Meetings in August and September!

Contact: Alexandralawrence@gmail.com



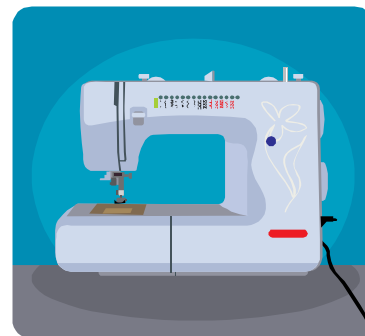
Harvest of Quilts IX Show

CRAZY ABOUT QUILTING

September 17 & 18, 2011

Sat. 9am – 5pm Sun. 11am – 4pm

Admission \$6.00



Vanderburgh 4-H Center Auditorium

201 F Boonville-New Harmony Road

Evansville, IN

Raintree Quilters Guild, Inc.

www.raintreequiltersguild.org

Needle and Thread

Q: How do I know what needle to use for quilting, sewing, embroidering, and piecing?

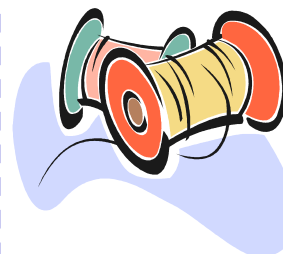
A: Use the Topstitch style needle for nearly all applications including piecing (#80/12 needle), em-

broidery (#90/14), quilting (needle size depends on the thread size), general sewing construction/crafting (usually #80/12). The only exception is when sewing on knit fabrics and then use a ball point needle.



Q: What determines if a thread is for hand quilting?

A: Strength. Hand quilting puts a lot of repeat stress on thread so it requires a strong thread. Traditional hand quilting thread is coated or glazed with wax or starch which makes the thread rather stiff, slick, and strong. Caution: Do not use a coated or glazed thread in a machine. The coating will rub off and gum up the machine.



We Moved to

9840 N. Michigan Road (317) 757-8340

Carmel, IN 46032

www.quiltquarters.com

1/4 Mile North of 465 on Michigan Rd, Exit 27

Over 6000 Bolts of Fabric, Books & Patterns

Join Us for Classes & Clubs

Patchwork Pals meets the 4th Monday of month

-highlights quilting patterns & techniques-

Sewing Circle/Embroidery Club meets the 3rd Sat

-covers all sewing topics: garment, home dec, etc-

Authorized BERNINA dealer for
Sales & Service

BERNINA+

QUILTERS GUILD OF INDIANAPOLIS NORTH GUILD MINUTES

August 5, 2011

Respectfully Submitted by: *Ann Slabaugh, Secretary*

Jo Kidwell opened the meeting. We had six visitors, one new member and five August birthdays present.

Announcements

Jo requested additional volunteers to provide the Quilters Tip of the Month for the months of September, October, and November.

Jo asked for volunteers for the Christmas Party in December. Mary Strinka, Elizabeth Meek, and Alice Martina Smith volunteered to be the Christmas committee.

Jennifer reminded us that the newsletters are now on line. She also asked that we continue to recycle the newsletters at each meeting. These efforts have helped to cut back on costs and will provide financial support for other projects.

Quilts are being produced for the Red Door, which is an organization that assists with cancer patients. Guild members can purchase blocks that can be developed into quilts for this endeavor.

Alice Martina-Smith – Announced that pictures of the guild's accomplishments were in a scrapbook located on one of the back tables. She also told us that all of these pictures have been scanned and put on a CD for reference if we would like to purchase one.

The annual fall retreat is coming up on September 16th through the 18th in Columbus, IN at the Holiday Inn. The cost for an all inclusive week-end is \$200.00 and Bonnie Borntrager is still accepting applications for the few places left. The quilt block for the retreat – Road of Treasures – is a variation of Wagon Tracks. There will be a “Trading Post” for various colors for this block. To participate, cut six (6) two inch (2”) squares. Donate five and get five back.

Mary Strinka thanked everyone for all of the quilts that had been tied. She told us that quilt bundles are available today to do with as we wish. Mary said that 20 of the tied quilts went to the Lutherwood Home, and 23 quilts went to The Villages.

Minute Fact – Debbie Goold continued her information about our quilt guild. The guild is 33 years old and it was decided that a logo was needed. The original logo was an embroidery hoop with two flags that were quilt blocks. Walter Meese designed a new block that was a peony and was based on an eight point star which was a variation of the Lemoyne Star. Debbie showed us the “quilt” that is used at meetings. This logo is also used on all things representing QGI.

Quilters Tip of the Month – Trish McComas told us of her difficulty with fusible interfacing and keeping track of the instructions. She recommended that we get the instructions for each kind of fusible interfacing and pin it to the interfacing. Otherwise, we might not be able to correctly apply the interfacing. This is especially important when keeping leftover interfacing for future use.

Block of the Month – Terry and Margaret announced that they received 24 quilt blocks this month. And the winner of the blocks was Janet Scott. Some of the blocks were embellished and the names for those ladies going the extra distance were put in a pot for an extra prize. Joyce Byllesby and Janet Scott received these prizes,

Next month the block will be a braid. Terry showed us several examples of how this could be used in our quilts. She also explained that this was an excellent way of using scrap fabric.

Mystery Quilt – Ruth Middleton said that she has given the last of the instructions. The winner of this month's prize was Janet Shotwell.

Fabric Exchange – Wanda told us that next month those participating should bring eight (8) - 2”x8” batik strips that would contrast well with black.

Show and Tell – Ten ladies shared with us their bed quilts, small auction quilts, baby quilts, wall hangings and bags. One of the ladies received a blue ribbon and reserve champion in the Marion County Fair. Another of our group also won a blue ribbon for her wall hanging at the Marion County Fair.

Program – Jo Kidwell introduced Lydia Stout who owns Ady's Fabric and Notions in Morgantown, IN. Lydia brought many items from her shop and either demonstrated the use of the tools or told us of the various ways things could be used. She also introduced us to some of her books, notions and fabrics. Her talk was both interesting and informative. We should all consider a road trip to Morgantown to visit her shop.

Lambert	Debbie	Sep	1
Robinson	Johnnie	Sep	2
Davis	Patty	Sep	4
Frank	Mary Ann	Sep	4
Pleiss	Judy	Sep	5
Wentworth	Teri	Sep	5
Kocher	Evelyn	Sep	7
Hupp	Lynn	Sep	9
Billiard	Diane	Sep	10
Stockmeyer	Lajunia	Sep	10
Pitt	Jane	Sep	12
Schuetz	Caryl	Sep	14
Turner	Elaine	Sep	14
Sieck	Holly	Sep	15
Brown	Sonia	Sep	16
Koeneman	Amy	Sep	16
Alyea	Linda	Sep	20
Weller	Becky	Sep	20
Clayburn	Barbara	Sep	21
Coleman	Linda	Sep	23
Newell	Marion	Sep	23
Howell	Frieda	Sep	24
Taylor	Janet M.	Sep	24
Joseph	Nancy	Sep	25
Nickey	Kay	Sep	26
Siegman	Pat	Sep	26
Ziegler	Judy	Sep	26
Bettenhausen	Peg	Sep	27
Kaag	Jane	Sep	27
Harris	Marie	Sep	28
Huber	Marsha	Sep	28
Litfin	Connie	Sep	28
Nelson	Rhonda	Sep	30

Happy Birthday

Newsletter Advertising

If you would like to advertise in Bits and Pieces, please contact Carol Decker at 317-784-5205 or deckercl@yahoo.com

Sew Much More



8701 Southeastern Ave
Indianapolis, IN 46239
317-862-5739

Hours:
TU-FRI 10 am-5 pm
SAT 10 am-3 pm

Quality quilting cottons, patterns and notions.
Full line of Floriani machine embroidery thread, stabilizers and software.
Superior Thread - Rainbows, The Bottom Line, So-Finel and Masterpiece.
Tutto sewing machine luggage.
Classes.

10% discount on non-sale items for QGI members

www.sewmuchmoredb.com



Sarah's Machine Quilting

Sales & Service

HINTERBERG
DESIGN

Machine Quilting Frames

NOLTING®

765-779-4400

By Appointment

5308 N. Mechanicsburg Road
Middletown, Indiana 47356

www.gardenschools.com/smq

Experts in Retirement Living & Senior Healthcare

Our Services Include:

- Garden Homes
- Assisted Living Apartments
- New Energy Wellness
- Moving Forward Rehabilitation
- Auguste's Cottage Memory Care
- Long-Term Care
- Skilled Nursing Services
- Respite Care
- Hospice Care

American Senior Communities is proud to service 23 locations in the greater Indianapolis area. To find a location near you, visit our website at www.AmericanSrCommunities.com.



www.AmericanSrCommunities.com





THE ROVING REPORTER

By *Carol Victory*

This month the Roving Reporter is pleased to introduce you to Indianapolis' oldest cross stitch shop Needle Fever. Debi Eckersall, a member of the guild and a supporter of the quilt show, has owned Needle Fever for almost a year now.

Debi carries a complete supply of cross stitch patterns, threads, embellishments and accessories. She has recently started to carry embroidery patterns and plans to introduce needlepoint items soon.

If you need beads, speciality buttons or fibers to embellish your quilts, Needle Fever is the place to go. Be sure to stop by and see all the items that Debi has in stock. She is more than willing to place special orders for anything you may need.



Needle Fever



Debbie with a Customer



Needle Rolls



Embellishment Wall

2011 QGI Quilt Show Quilt Registration Form

“A Quilter’s Journey”

Registration Deadline: August 31, 2011

Select drop-off area

- North Northeast
 West Downtown/South

Are you a current member of the Quilters Guild of Indianapolis? Yes No

Name _____ Home Phone _____

Email Address _____ Alternate Phone _____

I understand that, while all efforts will be made to take the utmost care of each show entry, neither the Quilters Guild of Indianapolis nor any members of the Quilt Show Committee, nor the show site will be responsible for damage of item submitted for the show. I further understand that photographs of my quilt may be taken by a member of the Quilt Show Committee and be made available for purchase, as part of a quilt show compilation CD, or be posted on a QGI website or newsletter. I give permission to QGI to photograph my quilt for this purpose.

Member’s Signature _____ Date _____

Quilt Description: Quilt Name _____

Quilt Height (floor to ceiling) _____ inches Quilt Width (side to side) _____ inches

Design Source: _____ Original design Workshop by: _____

Book/Pattern by: _____

Construction Details – List all involved in quilt construction: Owned by: _____

Pieced/Appliquéd by: _____ Quilted by: _____

How was this quilted? Hand Quilted Machine Quilted Mixed TechniqueHanging Information: Quilt has a 4” sleeve for hanging Wearable item which requires hanger Other (please describe): _____**Quilt Category and Judging**Please check only one: To be judged (\$7.00) For Display Only (no charge)Is this quilt to be hung with “My Favorite Trip” challenge quilts? Yes NoIs this quilt to be hung with a group of quilts (e.g. bee or mystery quilts)? No Yes, group name _____

Quilt Category – please select only one category (Please see category definitions on back of this page before selecting a category.)

- | | | |
|---|--|--|
| <input type="checkbox"/> Challenge – My Favorite Trip | <input type="checkbox"/> Appliqué Bed | <input type="checkbox"/> Appliqué Large and Small Wall |
| <input type="checkbox"/> Pieced Bed | <input type="checkbox"/> Pieced Large Wall | <input type="checkbox"/> Pieced Small Wall |
| <input type="checkbox"/> Group-Three or more quilters | <input type="checkbox"/> Special or Mixed Technique-any size | <input type="checkbox"/> Art Quilts |
| <input type="checkbox"/> Miniature | <input type="checkbox"/> Wearable Quilted | |

Send entry form and fee to Kathy Jensen, 16195 Oliver St., Fishers, IN 46037. Form will not be processed until entry fee is received by quilt show registrar. Incomplete forms will not be processed and you will be notified. Fee is \$7.00 for judged quilts, no charge for non-judged quilts. Please be prepared to provide correct change.

Questions? Contact Kathy Jensen at katien61@yahoo.com or 317-485-6384. Please indicate “Quilt Show Registration” in the email subject line.

For registration use:

Quilt ID # _____ Date Confirmed (reg & payment received): _____

A Quilters Journey – Quilt Show 2011 - Quilt Registration Instructions

Eligibility: To display items in the guild show, you must be a current member of Quilters Guild of Indianapolis. The items should not have been shown in a previous QGI show. All quilts must be quilted by machine or hand quilting. Tied quilts will not be accepted for judging.

Registration Fees and Judging: There will be no registration fee for quilts and quilted items displayed at the show unless the item is to be judged. Judging is optional. If you wish to have your quilt judged, the fee is \$7 for each item to be judged. Judged quilts will receive a written evaluation and winners will receive ribbons. Winners of judged categories are asked to bring their items to the November 2011 General Meeting of QGI.

Form Instructions:

1. The form must be filled out completely before it will be accepted for registration. One registration form is required for each quilt/item entered.
2. Quilts must be measured accurately to be displayed at the show. Please note that quilt height is the floor to ceiling distance. The quilt width is side to side distance.
3. All quilts must have a 4" sleeve attached to the top of the quilt for hanging. Any quilts without a sleeve will not be displayed in the show.
4. **All forms and payment must be received by the registration chair no later than AUGUST 31, 2011.** There will be collection boxes or people at all meetings in July and August, and registration and money if judged may be given to them. Forms may also be mailed to Kathy Jensen, 16195 Oliver St., Fishers, IN 46037.
5. No refunds will be provided on the judging fees.
6. All persons involved in making the quilt must be listed in applicable sections of the registration form, and design credit must be given to the source if the quilt is not an original design.
7. Bee or group quilts must all be registered at the same time and with the same group name to ensure they are hung together.
8. You will determine the quilt category from the following list:
 - a. **Challenge-My Favorite Trip** (Quilt may be of any technique depicting the theme "My Favorite Trip".)
 - b. **Appliqué Bed** (Appliqué predominates over other techniques in amount or effect. May be constructed by machine or hand)
 - c. **Appliqué Large and Small Wall** (Appliqué predominates over other techniques in amount or effect.) May be constructed by machine or hand)
 - d. **Pieced Bed** (Width 60" or more, length 80" or more. Piecing predominates over other techniques in amount or effect. May be constructed by machine or hand pieced.)
 - e. **Pieced Large Wall** (Width and length 40" or more on any side. Not considered a bed quilt.) Piecing predominates over other techniques in amount or effect. May be constructed by machine or hand pieced.)
 - f. **Pieced Small Wall** (Width less than 40", length less than 60". Piecing predominates over other techniques in amount or effect. May be constructed by machine or hand pieced.)
 - g. **Group**— three or more quilters (Involves three or more quilters in construction and quilting, no technique or size restrictions.)
 - h. **Special or Mixed Technique**-any size (Balanced use of two techniques and may include cross-stitch, embroidery, whole cloth or three dimensional work.)
 - i. **Art Quilts** (Treated as a work of visual art, must have three layers, made of fabric and quilted.)
 - j. **Miniature** (All aspects of the quilt are reduced in size, no bigger than 24" X 24".)
 - k. **Wearable Quilted** (Any clothing item constructed of fabric and batting and constructed by any technique.)

Quilt Drop-off and Pick-up

1. Quilt drop off day is October 22nd. At drop off, each quilt must be in a separate cloth bag or will not be accepted. Both the bag and the quilt must have a secured label with the quilt name and registration ID number (which will be provided by the registration chair). You will be given a slip to claim your item after the show. Do not lose the claim slip! Pick up person MUST have the claim slip to retrieve your quilt after the show. Drop off locations will be published in the September issue of *Bits N Pieces* and on the QGI website.
2. Quilt pick up will be after the quilt show from 6 pm to 7 pm on October 29th. Make necessary arrangements to have your quilt picked up at this time if you are unavailable. Pick up person MUST have the claim slip to retrieve your quilt after the show.

Questions? Registration Chair – Kathy Jensen, katiens1@yahoo.com, 317-485-6384
 Quilt Show Chair – Carol Victory, carol.victory@yahoo.com, 317-873-4055

Out to Lunch Bunch Minutes

May 26, 2011

Respectfully Submitted By: *Diane Billiard*

Dallas Reed greeted everyone and opened the meeting with 79 members and 8 guests. Alice was unable to attend due to her daughter's illness.

ANNOUNCEMENTS

Pam Murdock received the items Pat Knoechel sold at the June meeting and has them available for pick-up.

A new quilt shop, Crimson Tate, is opening on 845 Mass. Avenue and is located east of College Ave. across from the IPS bus hub and the old Coca Cola building. Heather Givans is the owner. While her inventory is limited at this time, she is expecting new shipments soon.

Terry Lichtenfelt described the need for Angel Gowns and premie quilts. Tracy Barta and Susan Bassler take them to their respective hospital's neonatal units.

Donna Huse announced she is collecting Hobbs and Mountain Mist batting symbols. They help defray the costs of the large rolls of batting used by the Charity Quilts group.

She had kits cut out and available on the back table for making quilts for Lutherwood and the local Chin families. She requested quilts be at least 60"x 80" for Lutherwood

By-laws have been revised by the Board and will be presented for a vote at either the October or Nov. General Meeting. They will be published one month before the voting takes place.

BOM - Monica Santangelo announced the August BOM called Star Log Cabin would feature dark lavender and lighter fabric. Bonnie Baker was the lucky winner of 23 July BOMs called Christmas Stars.

Julie Grausam had QGI logo bags and pins available for purchase

SPEAKER

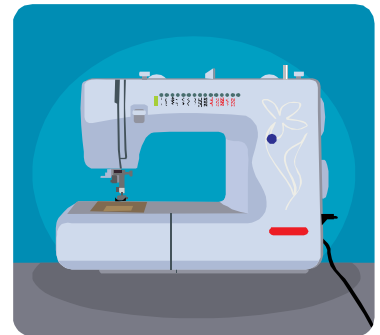
Everyone was curious with all the luscious looking quilted items spread on the table by the speaker's stand. They belonged to Linda Gray, the guest speaker for the meeting. Linda gave a lively description of her "first" presentation in front of a group along with all

the "flubs" that occurred along the way. She said Dallas Reed was instrumental in encouraging her to liven up her creativity by doing a Trash Can Surprise quilt top. From there, she took off on her own designing and constructing quilts and wall hangings in fabrics from two of her favorite fabric designers, Kaffe Fassett and Phillip Jacobs. Bright, vibrant colors are her trademark. Linda finished her speech by showing examples of her series on self-portraits, jazz and trees. The OTLB quilters were appreciative of her collection and comments.

Newsletter Deadlines

All material for publication in the newsletter must be received no later than the 10th of the month prior to following month's publication (i.e.: November 10th for the December newsletter). Please email submissions to qginewsletter@yahoo.com.

Stitch in Time: Con- serving Your Treasured Quilt



September 17

10:00 - noon

\$10 per member, \$20 per non-member

Indiana State Museum

Learn how the museum stores, cleans, repairs and exhibits quilts, and how you can adapt these techniques to quilts in your own collection. Conservator Gaby Kienitz will describe these methods in detail, and provide small samples, suppliers' lists and Internet resources.

For information call 317.232.1637.

Quilt Chart

Here is a handy chart to help you determine the finished size of your bed quilt and the amount of fabric to purchase for the lining. Yardage is based on 44" wide fabric. You will need to cut the lining fabric into 2 equal pieces and seam together for twin and double sizes. Cut yardage into three equal pieces and seam together for queen and king sizes.

Quilt Type:	Standard Size:	Yardage for Lining:
Twin	63" x 87"	5-1/4 yards
Double	78" x 87"	5-1/4 yards
Queen	84" x 92"	7-1/2 yards
King	100" x 92"	8 yards



Batting

There are many, many types and brands of quilt batting on today's market. Unfortunately, no single batting is the best choice for every project. Basically, there are three types of fiber content found in batting: cotton, polyester, and wool. Each type is appropriate for different looks and purposes.



The majority of quilters use either polyester or cotton batts. Batting comes in many thicknesses called "loft." If you are new to hand quilting, use either a low-loft or medium-loft batting. It makes the quilting stitch much easier to learn. For machine quilting 100% cotton batting seems to work best as the quilt top and backing do not shift as much as they do when using a synthetic batting.

Make sure your batting is made by a reputable company as inexpensive brands are sometimes uneven in loft thicknesses and not properly treated. Read the product information included on batting packages. The more you understand about the differences in battings the better decisions you will be able to make for your quilts

Going Once, Going Twice--SOLD!!

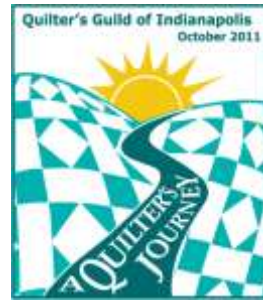
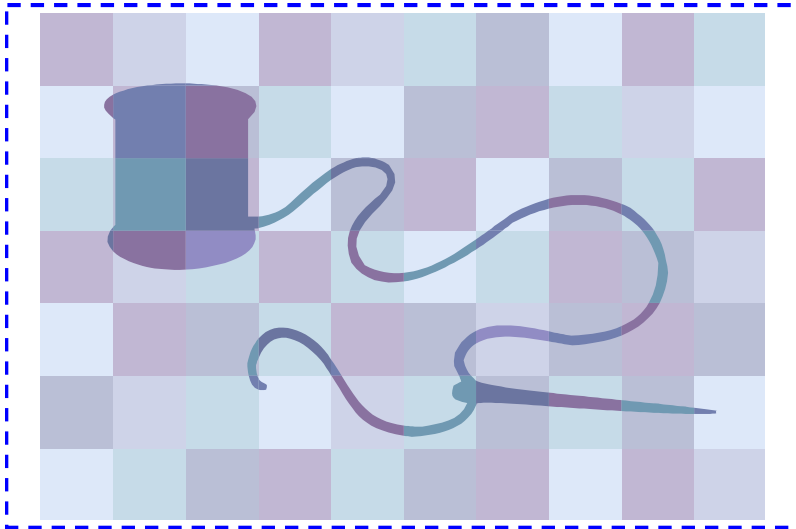
You will hear those words ring out again and again at the LARGE Auction of **SMALL** Quilts to be held at 2:00pm on Saturday, October 29. QGI has many new members since the last quilt show so the auction committee would like to remind everyone of **AUCTION RULES**:

SOLD!

- 1) Payment by CASH or CHECK only
- 2) A Bidder must register and receive a Bid Card to participate
- 3) Bidder must make payment in full before quilts are released
- 4) NO EARLY SALES! All quilts will be held until completion of the auction. If you can't attend or must leave early, please press your friend, bee-mate, neighbor or family member into service and have them bid and make payment in your stead.

Our **ABSOLUTELY AWESOME** committee has already been working for 11 months swapping ideas and suggestions. If this is your first QGI auction hang on to ?--SOMETHING!!--because you are in for some fast-paced fun! If you've been an observer or bidder in the past you might notice a few changes!

Auction Committee members: Theresa Cantwell, Margaret Duke, Julie Grausam, Connie Lancaster, Laura Welklin, Sandy Swircek, Terry Lichtenfelt



Quilt Show 2011 "A Quilter's Journey"

**October 28 & 29 – 10am to 5pm
Westfield Middle School
US 31 N & 181st Street
Westfield, Indiana**

"A Quilter's Journey" The Quilter's Guild of Indianapolis presents it's biennial quilt show October 28 and 29, 2011 at Westfield Middle School. Contemporary to traditional over 400 quilted items on display. Quilt appraisals, lectures and demonstrations will be going on both days. There will be a vendor area with booths displaying fabric, sewing machines and craft supplies. Visit the food court for lunch.

Saturday will feature a small quilt auction. Many of the small quilts were made by nationally known quilters.

The show theme "A Quilter's Journey" is used in the challenge quilt category. Guild members will create a quilt that depicts a favorite trip.

To Guild Members: Volunteers will be needed. Contact Judy Parker to help make this year's quilt show a success.

**The Fussy Cut
Quilt Shop**

- Creative Ideas
- Friendly Service
- Quality Fabrics

201 Bethel Avenue, Suite A-1
Beech Grove, IN 46107
317-786-9289
www.theFussyCut.com

Proud dealers of
PFAFF

FOR THE LOVE OF SEWING

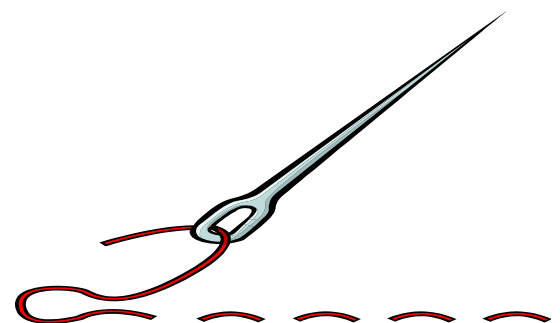
Indy Quilt Guild Members
receive 10% off all notions
and accessories at both
store locations!

Join us for a class or club!!

- Monthly Clubs, Quilting Classes
- Special Guest Teachers and Creative Classes

2 Indy Locations
North
Keystone & 65th St. 255-6332
West
Rockville & Raceway Rd. 271-5648

www.selectsewingsservice.com



The Death of a Dear Friend

The other day I received a phone call from the daughter of a Guild member, informing me that her mother had passed away peacefully in the night. As President and as Vice-President, I have tried very hard to get to know each and every one of you, but of course, with nearly 400 members, that's almost impossible. With Winona Eads, however, it was easy.

I first met Winona through my best friend, Alice Martina Smith. Winona had a sharp sense of humor, and a heart of gold. She loved to tell stories of her children, grandchildren, and great grandchildren, of whom she was very proud. But most of all, Winona loved to sew. And sew she did--at one time, regularly cranking out about thirty or so quilt tops for charity every month. She loved novelty fabrics, especially moose, and used them extensively in her quilt tops that were always as bright and cheerful as she was. Because of her love of moose, she was known affectionately as "The Moose Lady".



Winona Eads—The Moose Lady

Winona was also very clever, always finding or inventing simple, fast quilt patterns that were none the less beautiful, so she could use them to make her tops. Years ago, when she was more prolific, Winona would come up during Show and Tell and let us see her charity tops, taking the time to point out special fabrics or one of her clever patterns, so that we could make similar tops for charity if we wanted to. Winona only managed a few charity tops this year, but it was wonderful to see that even as she got older and sewing became more difficult, she held onto her passion for quilting and charity and didn't let them go.



Winona Works on a Quilt at a Recent OTLB Meeting

As Winona found it more difficult to get around, Alice, Pam Murdock, and I would do what we could to help her get to the OTLB meetings. She enjoyed these immensely, and laughed at the antics of Alice and Dallas. Afterwards, she would find ways of "suggesting" we stop by the Dairy Queen on the way back to her house. The Peanut Butter Bash, a delicious combination of hot fudge, peanut butter, and chocolate chunks, was her favorite. Winona came to the General meeting this year too, and sold some things at the Garage Sale, so perhaps some of you got to stop by and chat with her then. Whether you had the privilege of knowing this great lady, I encourage you all to stop by a Dairy Queen this week and enjoy a Peanut Butter Bash for Winona.

Website of the Month

Nifty Fifty Quilters are quilters across America who participate in 50 state quilt block swaps. Groups also make Breast Cancer Charity Quilts from each swap. The main goal is to share photos of swapped quilt blocks and to give inspiration to other quilters. Many of the quilt blocks were designed or chosen to represent each state.

There is also a section devoted to the 50 states which include educational information and photos of quilt blocks sorted by state. There are some great link pages for all types of crafts and charities.

www.niftyfiftyquilters.com/index.html

Quilter's Guild of Indianapolis Retreat

September 16, 17, 18, 2011

Holiday Inn and Conference Center

Columbus, Indiana

Come join us at the sixth annual Fall Retreat! At the retreat, you can sew on your own projects or one of several demos. The cost of the retreat includes meals for all three days, use of the sewing room and hotel facilities, and your choice of accommodations—single or double occupancy. This location is accessible to disabled persons.

The retreat is limited to 50 persons and is on a first-come, first-served basis, open to both members and non-members of the Quilters Guild of Indianapolis.

Registration Information

To register, complete the information below and send a \$50.00 deposit check payable to QGI to the following address: Bonnie Borntreger, 2845 N. Medford Avenue, Indianapolis, Indiana 46222. The balance is due by August 12, 2011. If you must cancel after registering, please do so before August 1, 2011 to receive a full refund. You will receive a brochure in August which provides a map, description of activities, and a list of things you might want to bring. If you have any questions in the meantime, contact Bonnie at (317) 923-2380 or bborntreger@iglide.net.

Name _____

Address _____

City, State _____

Phone Number _____ e-mail _____

Room Preference (check one)

Double (QGI member \$200) _____

Double (non-member \$225) _____

Single (QGI member \$260) _____

Single (non-member \$285) _____

If booking a Double, please indicate roommate preference: _____

Do you have any special dietary needs? _____

Payment Receipt For Your Records

Date Paid: _____ Amount Paid: _____

Check one: Paid by Check _____ Paid by Cash _____

Balance Due by August 12, 2011 Fall Quilting Retreat Sept 16- 18, 2011

PREPARING YOUR QUILT FOR THE QUILT SHOW

By: *Carol Victory*

I thought this would be a good time to give you some information about getting your quilt ready for the show.



- Ø Make sure that your quilt is completely finished before you bring it to your assigned drop off location.
- Ø Make sure that you have labeled your quilt(s) with your name, address and phone number(s) and Quilt ID number in large letters (see sample of label below). The label should be 3" x 5" in size. Place the label in the lower right hand corner of the back of the quilt.
- Ø Make sure that you have a 4" hanging sleeve on the back of your quilt – the only exception would be very small quilts which can be hung on the drape.
- Ø Your quilt(s) must be in a cloth bag that also has your name, address and phone number(s) and QUILT ID on it (pillow cases are great containers). Quilts delivered in plastic bags will not be accepted.
- Ø Confirm your drop off location and deliver your quilt(s) during the posted hours
- Ø Make sure that you receive a receipt for your quilt(s) – you must have this receipt to claim your quilt after the show. No quilts will be released without a receipt.
- Ø Plan to pick up your quilt(s) after 6:00 p.m. on Saturday. If you cannot come, you can have someone else pick up for you but that person must have the receipt(s).

If you have any questions about your registrations, please feel free to contact Kathy Jensen, Registrar, 317-485-6384 (h) or katjen61@yahoo.com. If you have quilt show questions, please contact Carol Victory, Show Chair, 317-627-7806 or carol.victory@yahoo.com

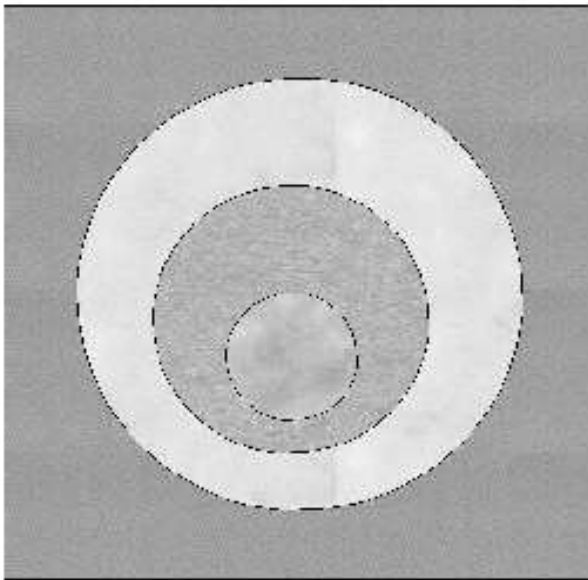
ID # 1234
Mary Smith
123 Main St
Indianapolis, IN 46211
317-123-4567

October Block of the Month

No Lumps on Me!

(A tribute to a friend in remission.)

8 inch finished square



Colors

Use flesh tone fabrics for the circles

Light - Cut 6" diameter circle

Medium - Cut 3 ½" diameter circle

Dark - Cut 1 ½" diameter circle

Background - Cut 8 ½" square

Use a fabric that reads solid and contrasts strongly with the largest circle fabric.

Bright fabrics are good.

Construction

The circles are 6, 3 ½ and 1 ½" in diameter completed size.

Applique using your favorite technique, remembering to add allowances if turning edges under.

Place and applique the largest circle in the center of the background fabric.

The next two circles go on top of the largest circle as shown in the block. You are free to position them wherever you want within the largest circle, just keep the smallest circle inside the middle sized one.

Applique in place.